

Multi-Car Line OEM Laptop Basics

Desktop Environment for Multi-Car Line OEM System

Desktop View

NOTE: It is not recommended to start more than one Multi-Car Line OEM System at a time.

Ubuntu Desktop

Start BMW 3GIO

Multi-Car Line system

Start Volvo VIDA Online

Multi-Car Line system

Start GM Tech2Win

Multi-Car Line system

Start Lexus Techstream

Multi-Car Line system

Start Toyota Techstream

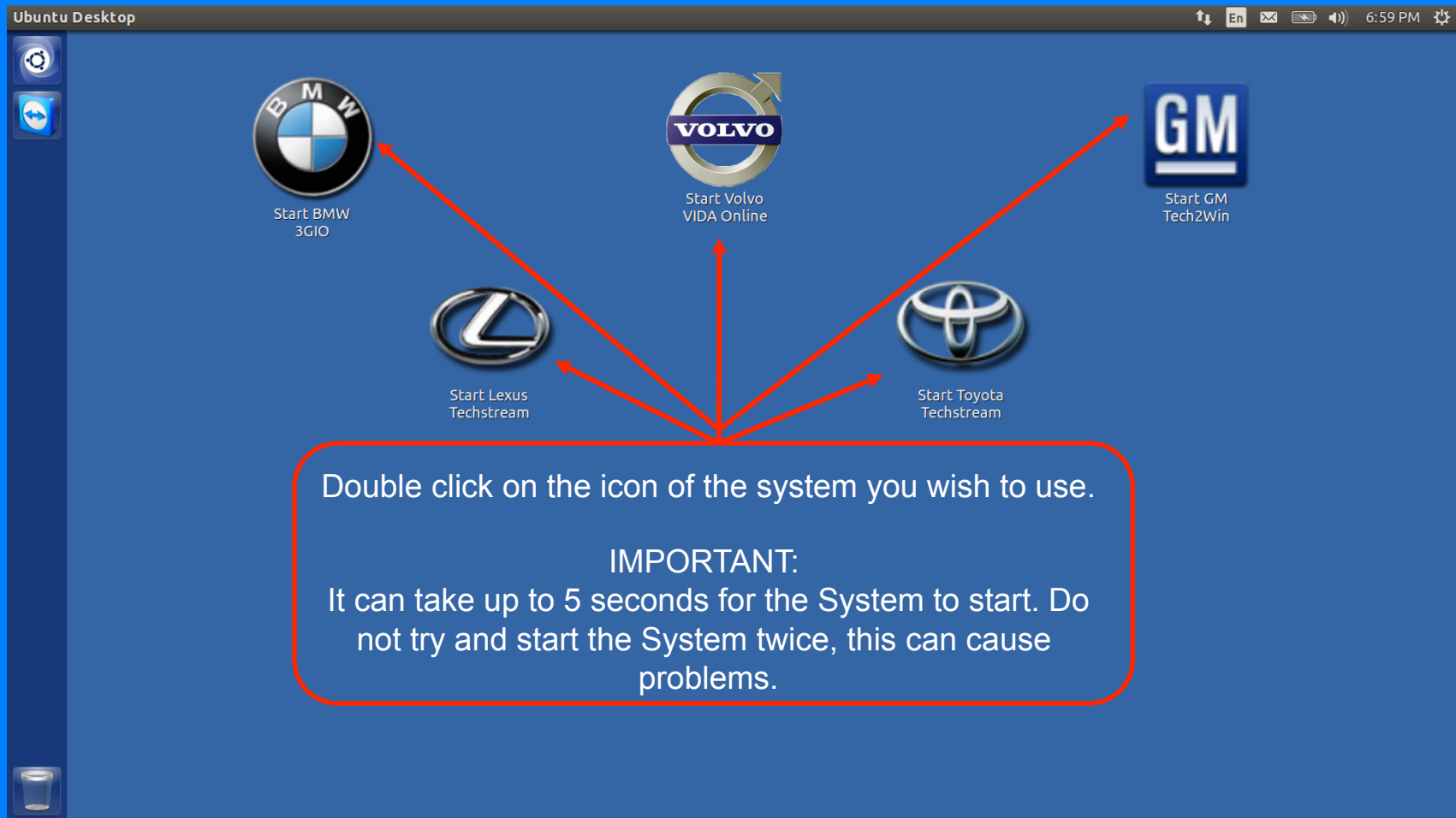
Multi-Car Line system

For support, please call Euro Car Logic Inc FIRST.

When remote support is needed click once here.

Multi-Car Line OEM Systems

After the Multi-Car Line System is started, Windows OS will start. Click on the appropriate login and continue as a normal Windows OS. When done with the Multi-Car Line OEM system, shut Windows down the normal way through the Start Menu.



Multi-Car Line OEM Systems

Ubuntu Desktop

Start BMW 3GIO

Start Volvo VIDA Online

Start GM Tech2Win

Start Lexus Techstream

Start Toyota Techstream

Error

You are not Authorized to use this application.
If you want this application, please contact your distributor.

If you have Authorizaton, please plug in the Green USB Dongle and try again.

OK

This message will pop up if you do not have the proper authorization for the multi-car line OEM system.

If you have the proper authorization, please make sure the Green USB Dongle is plugged in. If not plug the Dongle in and retry.

Click OK to clear this message.

Desktop Power Attributes

When laptop is plugged into power this icon can be displayed. This is to let you know how much time it will take for the battery to fully charge or discharge.

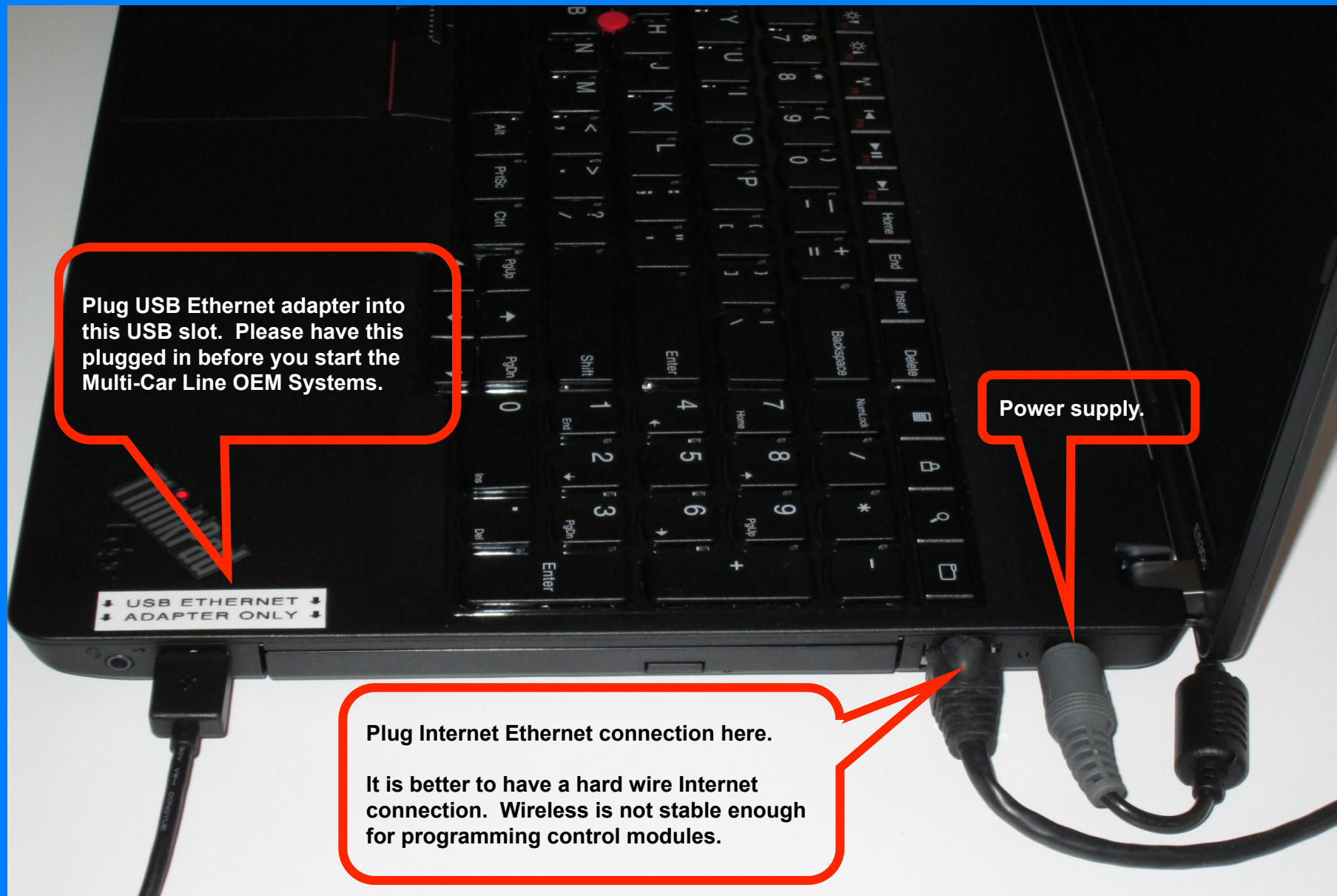


Laptop Connections

Plug in the Green USB Dongle BEFORE you start the laptop. The Dongle can be plugged in after laptop is booted but it is better to plug in before boot.



Laptop Connections



Plug USB Ethernet adapter into this USB slot. Please have this plugged in before you start the Multi-Car Line OEM Systems.

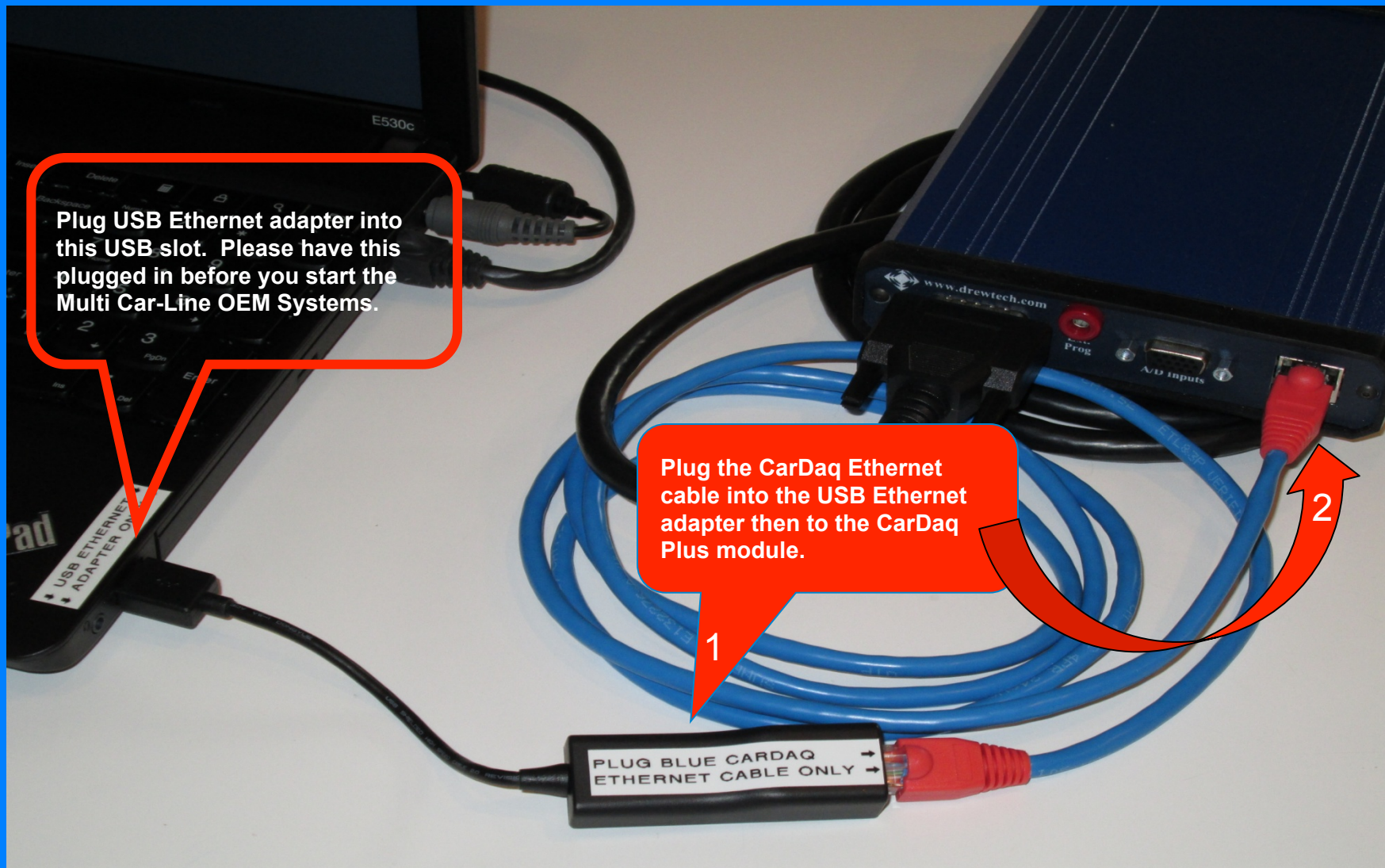
Power supply.

Plug Internet Ethernet connection here.

It is better to have a hard wire Internet connection. Wireless is not stable enough for programming control modules.

Drew Technologies CarDaq Connections

When using the CarDaq, use the Blue Ethernet cable supplied with the kit. The cable will have Red ends. A generic Ethernet cable will not work, you MUST use the supplied cable.



Known Problems

- Shop Internet speed.
 - This is the major issue we are encountering.
 - Whether we like it or not this system depends on a bi-directional data communication. Speed is important.
 - Download speed. MIN 3 mbps.
 - Upload speed is important too! MIN of 1 mbps.
- Technical Support.
 - Contact Euro Car Logic Inc first with the problem.
 - When Remote Support is needed you must make an appointment before the Remote Support session can start.

USB device is unrecognized on the Multi-Car Line OEM System OS.

- A driver might have to be installed manually. Follow the Technical Support procedure